

Treating the Two Main Components of Asthma

Asthma is a chronic disease with two main components: airway constriction and inflammation. *Advair Diskus* effectively treats the two main components of asthma with a single device.



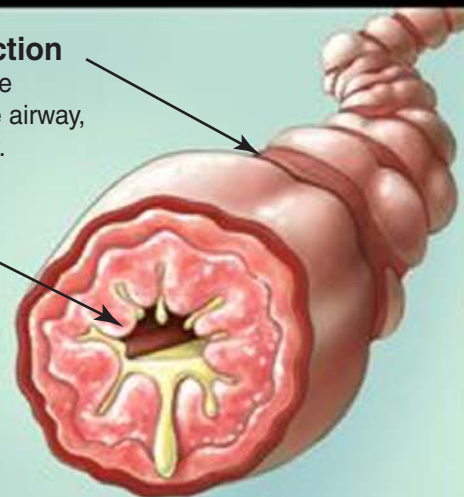
Two main components of asthma

Airway constriction

The tightening of the muscles around the airway, causing it to narrow.

Inflammation

The swelling and increased mucus in the airway, causing it to narrow.



How Advair[®] works

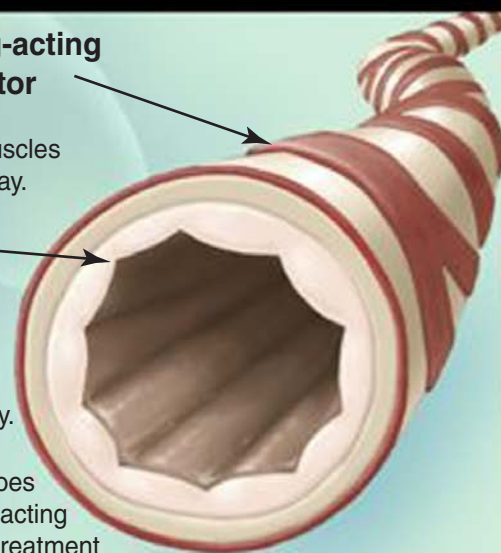
Inhaled long-acting bronchodilator

Helps prevent tightening of muscles around the airway.

Inhaled corticosteroid

Reduces inflammation inside the airway.

Advair Diskus does not replace fast-acting inhalers for the treatment of sudden symptoms.



Advair won't replace fast-acting inhalers for sudden symptoms and should not be taken more than twice a day.

Advair contains salmeterol. In patients with asthma, medicines like salmeterol may increase the chance of asthma-related death. So *Advair* is not for people whose asthma is well controlled on another controller medicine. People should speak to their doctor about the risks and benefits of treating their asthma with *Advair*. People taking *Advair* should see their doctor if their asthma does not improve. Thrush in the mouth and throat may occur. People should tell their doctor if they have a heart condition or high blood pressure. Some people may experience increased blood pressure, heart rate, or changes in heart rhythm. *Advair Diskus* is for patients 4 years and older. For patients 4 to 11 years old, *Advair Diskus* 100/50 is for those who have asthma symptoms while on an inhaled corticosteroid. *Advair HFA* is for patients 12 years and older.

For more information about *Advair* including complete prescribing information and medication guide visit www.gsk.com.

This information is provided by GlaxoSmithKline, a research-based pharmaceutical company and a world leader in respiratory care.